

Alaska Department of Fish and Game

Habitat Section
Southeast Region



114-33-10230 Tributary 4

ADDITION

Water body name:

Survey date: 6/5/2022

Quad: Juneau A-6

Species & Lifestage:

Upper Reach Latitude: 58.076132 **Longitude:** -135.826638

Survey crew: JL, DK, FC, RR

Lower Reach Latitude: 58.076324 **Longitude:** -135.823083

Findings: We surveyed this uncataloged stream using baited minnow traps and GPS and captured juvenile coho salmon. The tributary stream is ponded upstream of a series of culverts due to beaver activity (Table 1; Figures 1–3).

Recommendations: Add this uncataloged stream to the anadromous waters catalog for rearing coho salmon (Figure 4).

Nomination: Pending

Table 1.—114-33-10230 tributary 4 survey data.

Waypoint	Latitude	Longitude	Notes	Stream Width ft	Stream Substrate	Habitat Features	Gradient %	Sample Effort	Sample Results
442	58.076136	-135.826659	2-3 culverts draining beaver pond area. Fish habitat continues upstream.	6-8	Fine Organic		0-1	MT	19 CO



Figure 1.—Juvenile coho salmon captured at waypoint 442.



Figure 2.—Channel at waypoint 442.



Figure 3.—Culvert outlet at waypoint 442.

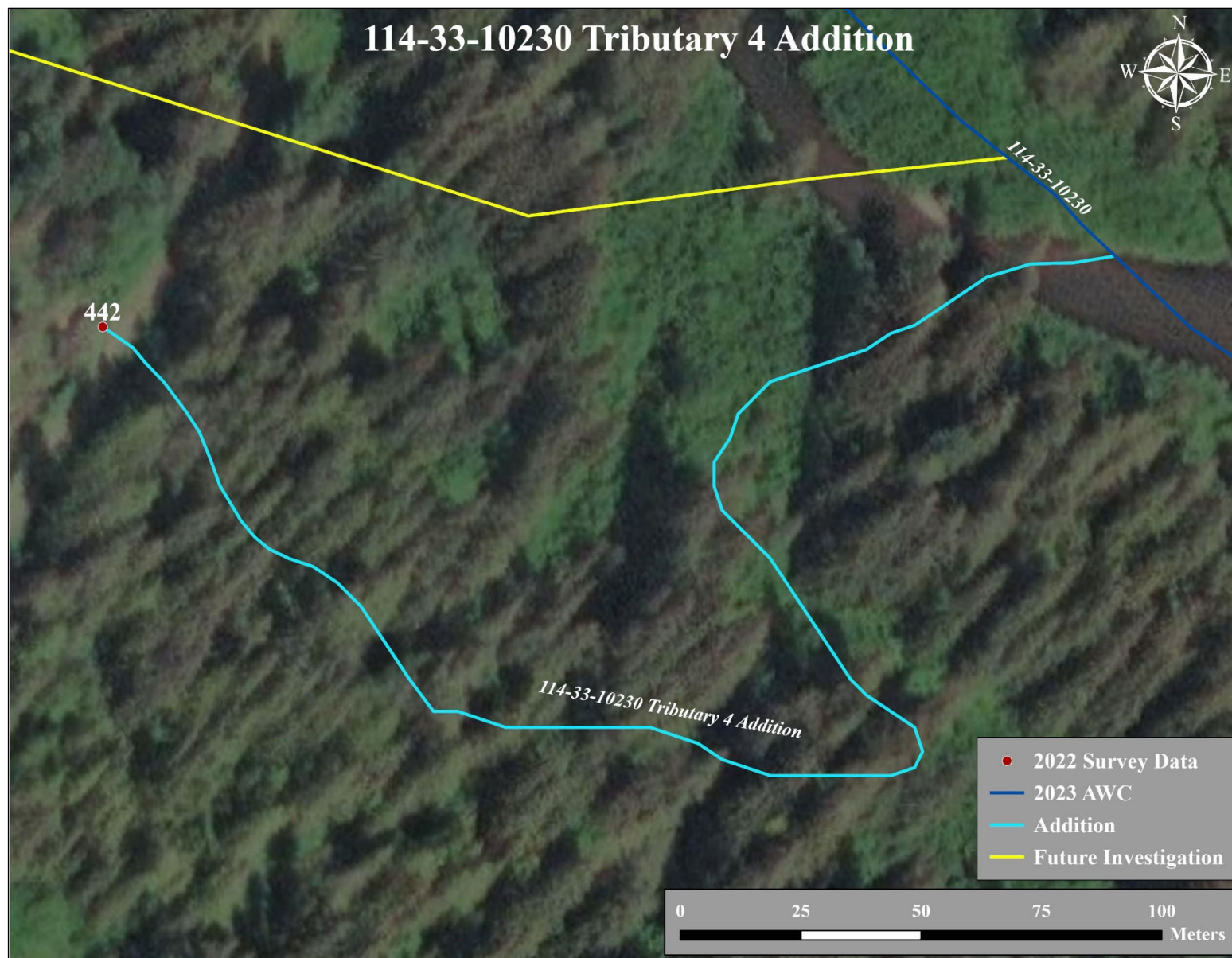


Figure 4.—114-33-10230 tributary 4 addition map.